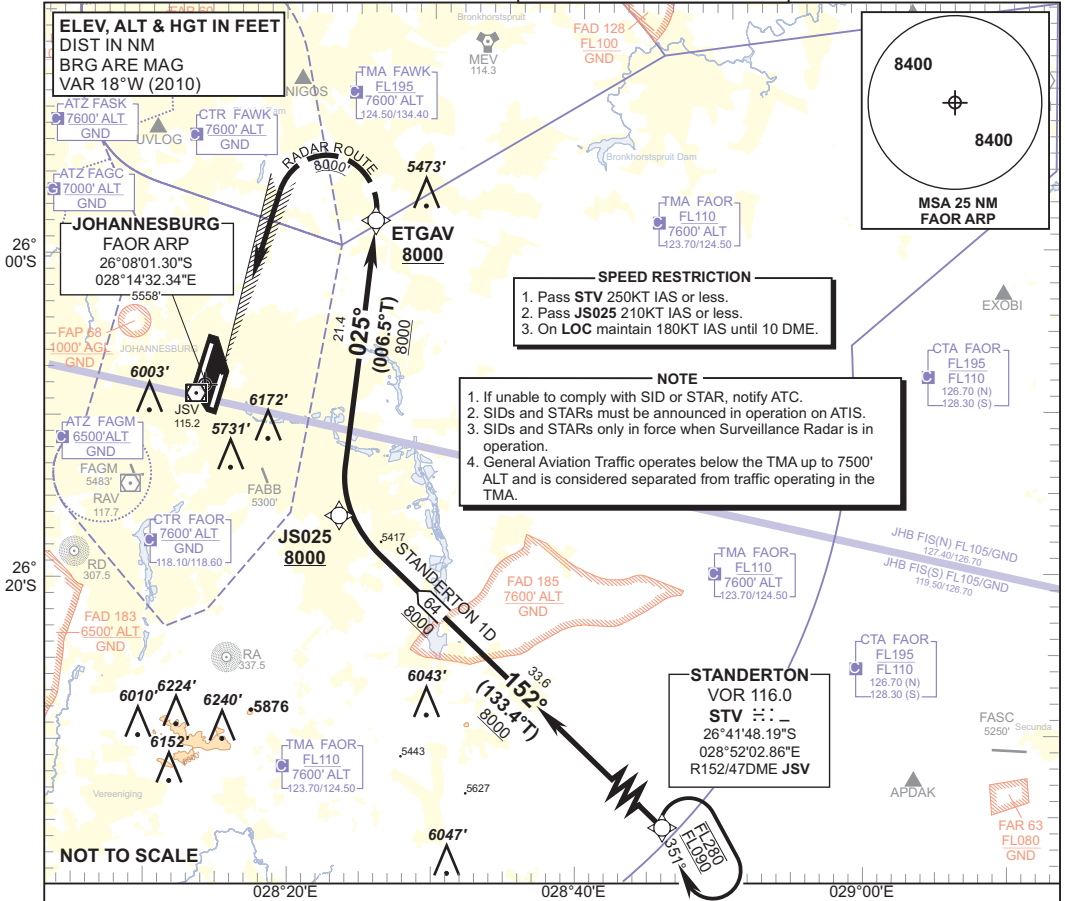


STANDARD ARRIVAL CHART - INSTRUMENT (STAR)

TRANSITION ALTITUDE
8000'
TRANSITION LEVEL
ATC

RADAR APP S 124.50 TWR E 118.60
E 124.50 W 118.10
W 123.70 ATIS 126.20
DIR 121.40 115.20
ACC N 126.70 SMC 121.90

JOHANNESBURG
(O.R. TAMBO INTERNATIONAL)
RNAV (GNSS) RWY 21L
STANDERTON 1D



SPEED RESTRICTION

1. Pass **STV** 250KT IAS or less.
2. Pass **JS025** 210KT IAS or less.
3. On **LOC** maintain 180KT IAS until 10 DME.

NOTE

1. If unable to comply with SID or STAR, notify ATC.
2. SIDs and STARs must be announced in operation on ATIS.
3. SIDs and STARs only in force when Surveillance Radar is in operation.
4. General Aviation Traffic operates below the TMA up to 7500' ALT and is considered separated from traffic operating in the TMA.

STANDERTON
VOR 116.0
STV :: -
26°41'48.19\"/>

STANDERTON 1D RWY 21L Leave STV to JS025. At JS025 turn right proceeding to ETGAV for radar vectoring onto the ILS LOC RWY 21L.

COMMUNICATION FAILURE PROCEDURE (Squawk 7600)

Before STV: Proceed to STV and enter the STANDERTON RNAV (GNSS) hold. Hold at last assigned level for minimum 5 MIN, then descend to FL130 in the hold, or maintain last assigned level if below FL130. Leave STV on the "After STV" Communication Failure Procedure.

After STV: Continue on the STANDERTON 1D RNAV (GNSS) STAR. At STV descend to FL130. At JS025 descend to FL090. At ETGAV descend to 8000' ALT and continue on the RNAV (GNSS) RWY 21L to JS3F1 and intercept the ILS RWY 21L and land RWY 21L.

Note: Aircraft entering the TMA at FL110 and below are to enter the STANDERTON RNAV (GNSS) hold at last assigned level, and continue on the routing for the STANDERTON 1D STAR.

Caution: Holding patterns below FL110 will be conducted partially outside controlled airspace.

In the event of a missed approach with the intention of diverting to an alternate aerodrome, proceed as follows:
 To the North and North-West: Follow the routing for the VASUR 3B SID.
 To the North-East: Follow the routing for the EGMEN 2B SID (Jet ACFT) or EXOBI 3B SID (Turboprop ACFT).
 To the South-East: Follow the routing for the APDAK 2B SID.
 To the South and South-West: Follow the routing for the RAGUL 3B SID.

CHANGE: SPEED RESTRICTION BLOCK